

# The Renaissance

2009-10: volume 6

*Always Patsy Cline*

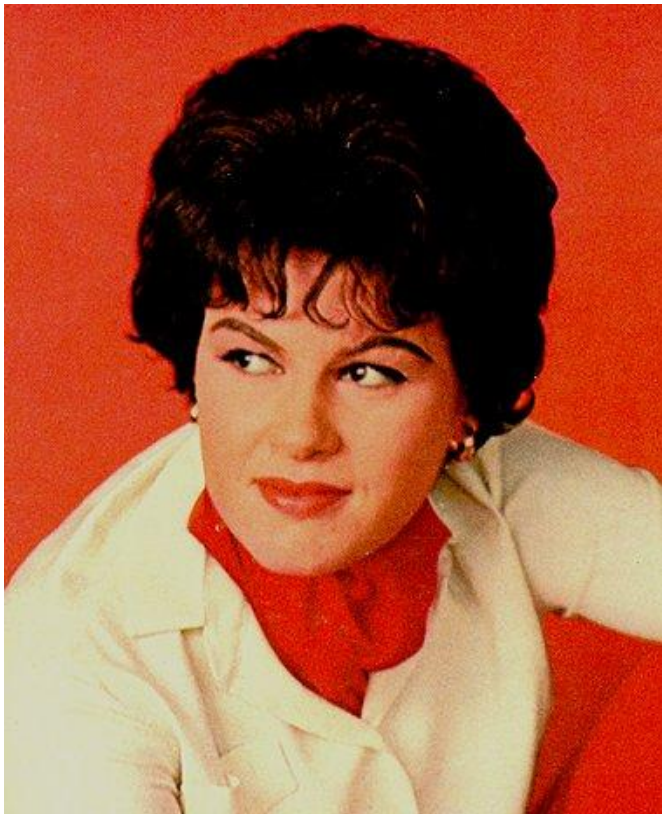
*October 15 & 16, 2009, 8:00 PM*

*October 17, 2009, 3:00 & 8:00 PM*

*October 18, 2009, 3:00 PM*

**Shaw**  
*Medical* **OTT**

*Off-Broadway Series*



*Virginia Patterson Hensley (September 8, 1932 – March 5, 1963), known professionally as Patsy Cline, was an American country music singer who enjoyed pop music crossover success during the era of the Nashville sound in the early 1960s. Since her death at age 30 in a 1963 plane crash at the height of her career, she has been considered one of the most influential, successful, revered, and acclaimed female vocalists of the 20th century. Only ten years after her death, she became the first female solo artist inducted into the Country Music Hall of Fame. In 2002, she was voted by artists and members of the Country Music*

*industry as number one on CMT's television special of The 40 Greatest Women of Country Music, and in 1999 she was voted number 11 on VH1's special "The 100 Greatest Women in Rock and Roll" by members and artists of the rock industry. According to her 1973 Country Music Hall of Fame plaque, "Her heritage of timeless recordings is testimony to her artistic capacity." Among those hits are "Walkin' After Midnight", "I Fall to Pieces", "She's Got You", "Crazy", and "Sweet Dreams".*

*Other plays based on Cline's life and career:*

*A Closer Walk with Patsy Cline*

*Patsy!*

*A version of A Closer Walk with Patsy Cline was performed only at the Grand Palace in Branson, Missouri.*

*Sweet Dreams is a 1985 biographical film which tells the life story of Patsy Cline. The movie was written by Robert Getchell and directed by Karel Reisz. It stars Jessica Lange, Ed Harris, Ann Wedgeworth, David Clennon, James Staley, Gary Basaraba and John Goodman. The movie was nominated for Academy Award for Best Actress (Jessica Lange). For all the musical sequences, Lange lip-synced to the original Patsy Cline recordings. The soundtrack of the same name was released in September 1985.*



*Jessica Lange as Patsy Cline*



*Always...Patsy Cline chronicles the real-life story of Mississippi native Louise Seger, who lived in Houston, Texas. In 1961, Seger, an ardent fan of Cline, arrived early at Houston's Esquire Ballroom for Cline's performance. In a chance encounter before the show, Seger met Cline, who she later persuaded to spend the night at her house rather than a hotel. Several weeks later, Seger received the first of many letters she would receive from Cline over the two year period prior to the singer's death. Cline signed each letter *Always ... Patsy Cline*.*

*The revue has made its way across the U. S., running off-Broadway in New York, New York and for over a year at Nashville's Ryman Auditorium, where it starred singer Mandy Barnett and sold out nightly.*